

**Product Name:** Concrete Winged Headwall

**EI Code:**

62016 - Headwall T1 Multi-Knockout suit RCP 225 to 375

62017 - Headwall T2 Multi-Knockout suit RCP 450 to 525

62018 - Headwall T3 Multi-Knockout suit RCP 600

**Dimensions:**

62016 - 720mm H x 1323mm W x 600mm D

62017 - 850mm H x 1395mm W x 600mm D

62018 - 880mm H x 1320mm W x 500mm D

**Weight:**

62016 - 327kg

62017 - 355kg

62018 - 250kg

**Material:** MRTS70 Concrete

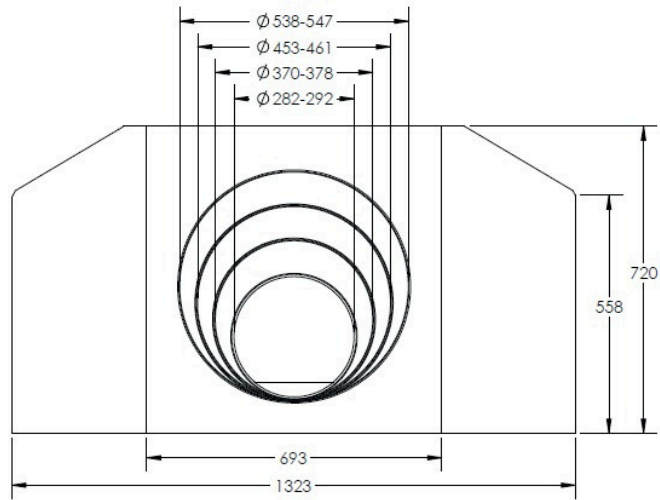
**Additional Information:**

This product has been tested to and complies with:

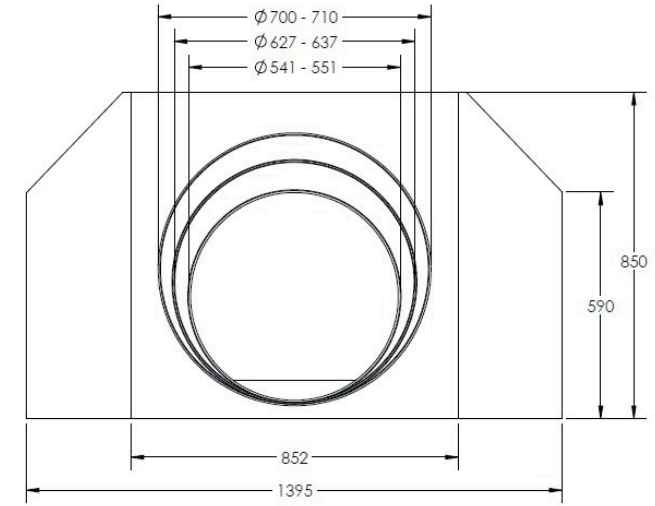
MRTS70 Concrete MRTS72 Manufacture of Precast Concrete elements AS3600 Concrete Structures AS5100.1 Bridge design, Part 1: Scope and General principles



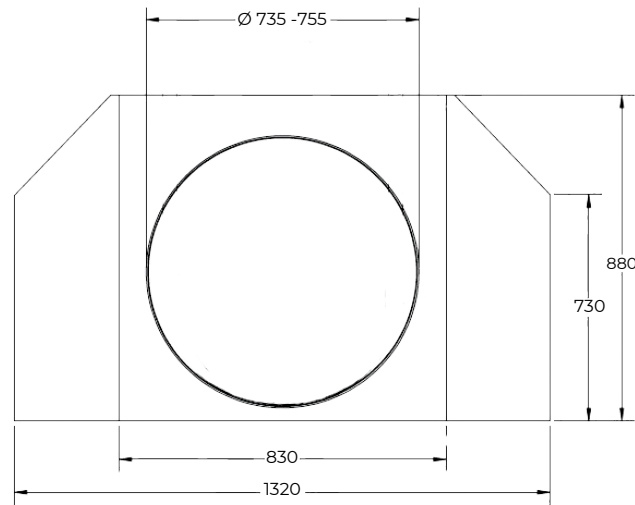
Disclaimer: All measurements are in millimetres and are subject to change without any prior notice. It is advised for this product to be installed by a professional contractor to ensure installation is correct. Further information is available at [www.everhard.com.au](http://www.everhard.com.au)



Product Code	Description	Weight	Style	1	2	3	4
62016	Headwall Suits 225-450 RCP	327	Low Back T1	282-292	370 - 378	453 - 547	538-547



Product Code	Description	Weight	Style	1	2	3
62017	Headwall Suits 450-600 RCP	355	High Back T2	541 - 551	627 - 637	700 - 710



Product Code	Description	Weight
62018	Headwall Suits 600 RCP	250