

Product Name:
Aqua Advanced - Concrete

EI Code:
10700A

EP:
1200L/ 8EP

Dimensions:
2890 H x Ø1875

Weight:
3312 Kg

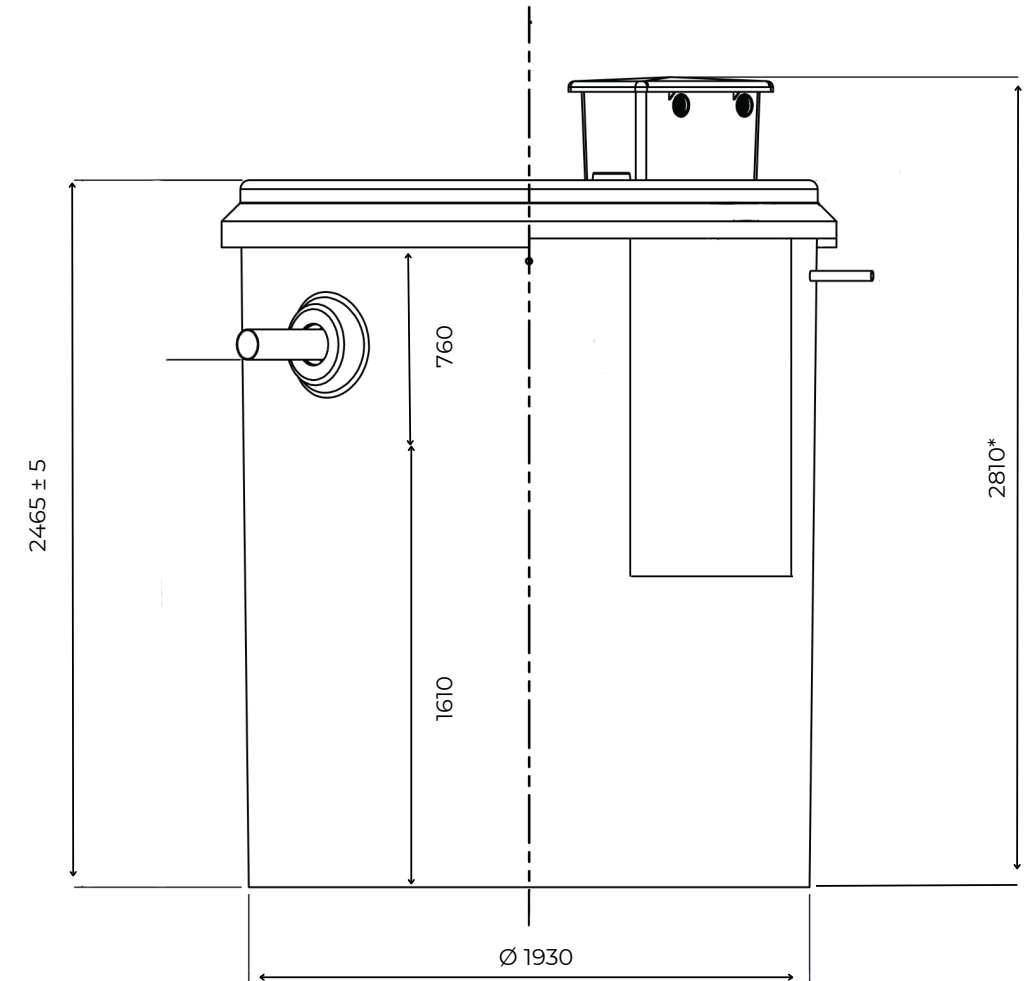
Material:
Concrete

Average Test Results & State Approvals (AS1546.3:2017):

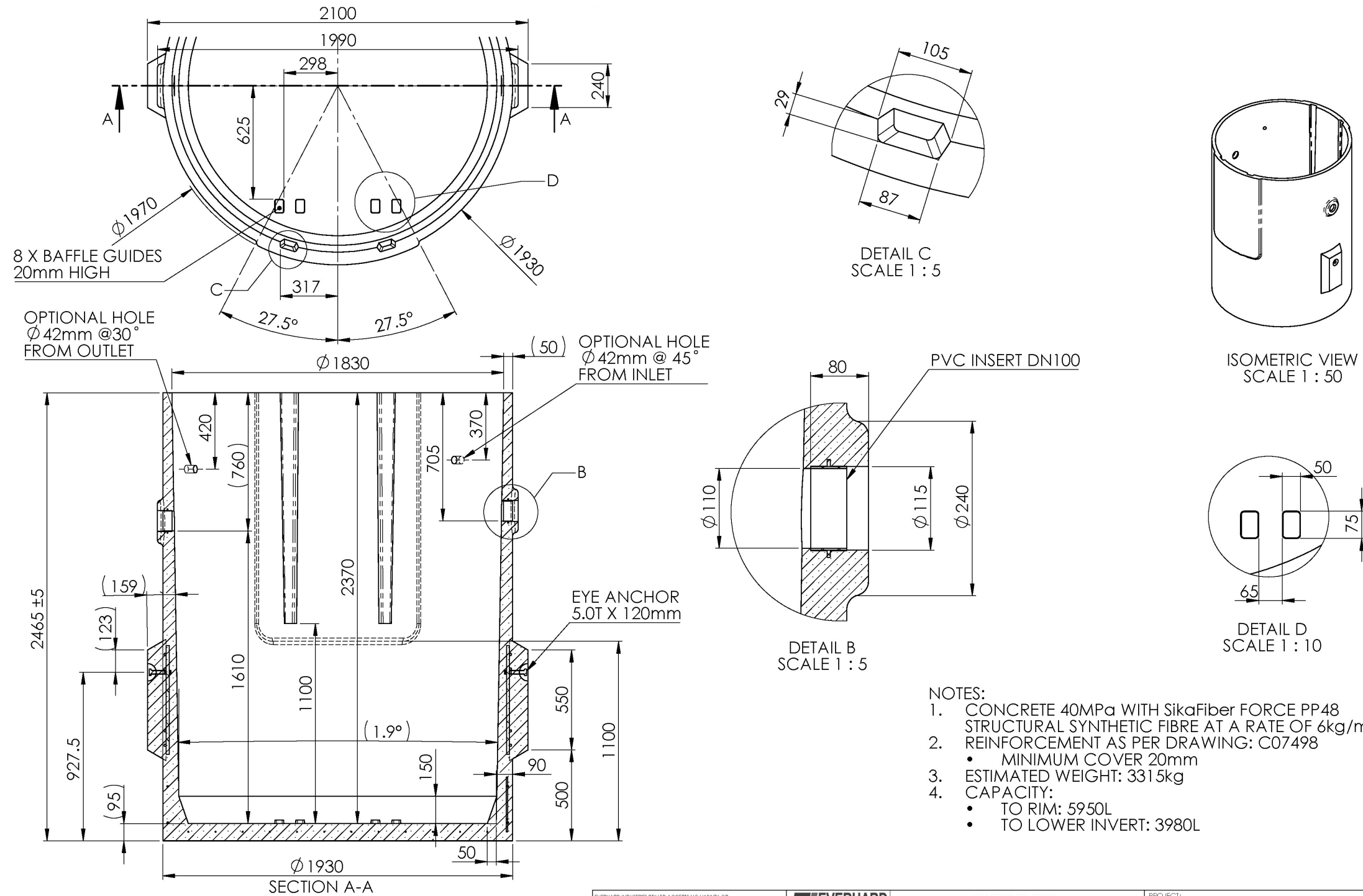
BOD5 (mg/L)	TSS (mg/L)	E.Coli (cfu/100ml)	Vol (litres)	Pump Out Frequency Years
1.25	5.4	.2	4,300	3.3

State	Tank Type	CERT No.	Expiry Date
VIC	Concrete	632	28/09/2025
QLD	Concrete	02/2021	27/01/2026
NSW	Concrete	STS-AWTS054	31/12/2025
NT	Concrete	2021/3682EH	22/02/2026
SA	Concrete	WWP-20074	28/09/2025
TAS	Concrete	DOC/21/16586	17/03/2026
WA	Concrete	632	28/09/2025

Disclaimer: All measurements are in millimetres and are subject to change without any prior notice. It is advised for this product to be installed by a professional contractor to ensure installation is correct. Further information is available at www.everhard.com.au



Chamber	Volume
Primary 1	915 L
Primary 2	848 L
Aeration	942 L
Clarification	671 L
Disinfection/ Irrigation	253 L
Emergency	1142 L



REV.	DESCRIPTION	DATE	APPROVED
2	ADDED LIFTING DETAIL BASED ON MOULD SUPPLIER DRAWINGS, REMOVED ANTI-FLOTATION FLANGE	18/06/2021	
3	ADDED LIFTING REINFORCEMENT	04/03/2022	
4	ADDED DIMENSIONS FOR THICKNESS OF LIFTING SECTION	16/03/2022	

EVERHARD INDUSTRIES PTY LTD ACCEPTS NO LIABILITY OR RESPONSIBILITY TO THE USER OR ANY OTHER PERSON OR ENTITY WITH RESPECT TO ANY LIABILITY, LOSS, DAMAGE OR INJURY CAUSED OR ALLEGED TO BE CAUSED, EITHER DIRECTLY OR INDIRECTLY, BY THE ADOPTION AND/OR USE OF THIS DRAWING. THIS INCLUDES, BUT IS NOT RESTRICTED TO, ANY INTERRUPTION OF SERVICES, LOSS OF ACTUAL OR ANTICIPATED BUSINESS INCOME AND PROFITS, OR CONSEQUENTIAL DAMAGES ARISING FROM, OR ASSOCIATED WITH THE USE OF ANY PRODUCT MADE IN ACCORDANCE WITH THIS DRAWING. FURTHERMORE, THIS DRAWING MUST NOT BE ASSUMED TO BE AN EQUIVALENT TO, OR A SUBSTITUTE FOR, ANY GENERAL USAGE OR PROJECT SPECIFIC DESIGN UNLESS ANALYSED AND APPROVED AS SUCH BY AN INDEPENDENT AND APPROPRIATELY QUALIFIED PROFESSIONAL ARRANGING FOR ANY SUCH ASSESSMENT IS THE RESPONSIBILITY OF THE CUSTOMER PURCHASING THE PRODUCT SHOWN IN THIS DRAWING FROM EVERHARD INDUSTRIES PTY LTD. IT IS THE USER'S RESPONSIBILITY TO INQUIRE THE APPROPRIATE PRODUCTS SELECTED AND THAT THE CORRECT SCALE WHEN USING A DRAWING IS UTILISED.

EVERHARD INDUSTRIES 454 NEWMAN ROAD GEEBUNG, QLD, 4034 PH : (07) 3637 6444 FAX : (07) 3265 2111		DO NOT SCALE DRAWING UNLESS OTHERWISE SPECIFIED: DIMENSIONS ARE IN MILLIMETERS THIRD ANGLE PROJECTION DEBUR AND BREAK SHARP EDGES SURFACE FINISH:		TOLERANCES: XX ± 2mm XX ± 0.2mm XXX ± 0.02mm	
DRAWN: DRS	SIGNATURE:	DATE: 26/03/2020	MATERIAL:	Concrete 40MPa 10mm Aggregate 100 slump	
CHK'D: KS		DATE: 26/03/2020		ESTIMATED WEIGHT: 3313.41 kg	
APP'VD:					

PROJECT:		Concrete Tanks	
TITLE:		4000L Deep Invert Tank	
DWG NO.:	C07554	REVISION:	4
PROD CODE:	SHEET 1 OF 1	SCALE:	1:20