

45L GREASE TRAP

INSTALLATION MANUAL



PRODUCTS TO USE THE GREASE TRAP RISER WITH

EI CODE	PRODUCT DESCRIPTION	DRILL GUIDE TO FOLLOW
84010	45L Grease Trap	1

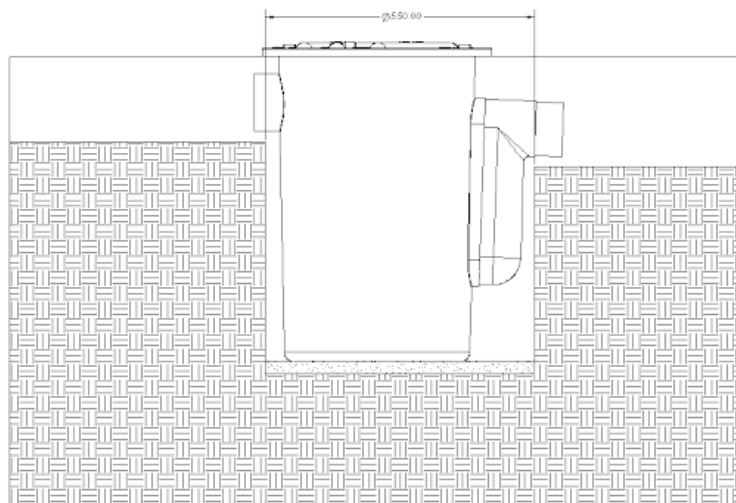
PURPOSE

The EVERHARD 45 Litre Polymer Grease Arrestor/Trap is primarily intended for use in domestic situations, where its primary function is to eliminate or reduce the presence of unwanted matter in sanitary drainage systems which would otherwise generate a deleterious impact on the sewer or wastewater disposal system. While Grease Arrestor/Traps are generally recognised to offer significant advantages in many situations, local authorities may have particular specifications in force.

Before selecting any Grease Arrestor/Trap, check with your local regulatory authority. The Polymer 45 litre Arrestor/Trap can greatly reduce grease, oils, and other kitchen waste matter, as well as help eliminate accumulated soapy residue, lint and hair in bathroom and laundry waste-water. All of these wastes can affect the efficiency of a septic, or other, domestic waste-water treatment system. They also pose major problems for large scale sewage treatment and water processing plants. The removal or reduction of these wastes encourages the growth of beneficial bacterial colonies, and the processes which “digest” and neutralise potentially harmful organisms. The EVERHARD 45 Litre Polymer Arrestor/Trap capacity is quite adequate for most normal domestic situations, and may be installed to receive waste-water from kitchen, bathroom, and laundry sources.

INSTALLATION

1. The Arrestor/Trap should be installed outdoors, in an area not likely to be flooded with storm or surface water. It should be as close as possible to the drain source, seated on a layer of compacted bedding sand in an excavation 550mm diameter, allowing the upper rim to be just above final surface level. Concrete or other paving can be placed around the unit, but the Rim MUST be above the surface by at least 14mm to allow the Cover to be fitted and removed.



45L GREASE TRAP

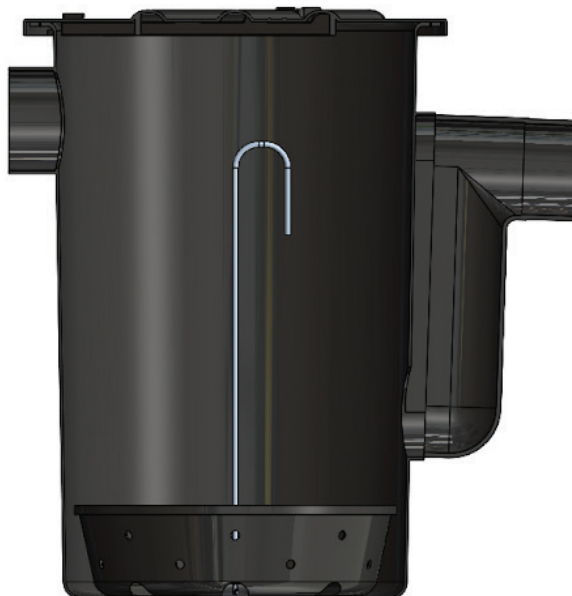
INSTALLATION MANUAL



2. Connect the inlet piping to the Arrestor/Trap as per AS/NZS 3500 requirements. Possible minor misalignment of pipes due to ground movement must be allowed for. The inlet accepts standard 100mm uPVC SWV pipe with socket, rubber ring joint or 100mm DWV slip coupling. DO NOT use a Pan Connector, or rely on Solvent Cement for pipe connection.



3. Connect the outlet piping from the unit to the tank, sewer, drain or disposal system, as authorised by the local regulatory authority. Connect the outlet piping to the Arrestor/Trap as per AS/NZS 3500 requirements. The inlet accepts standard 100mm uPVC SWV pipe with socket, rubber ring joint or 100mm DWV slip coupling. DO NOT use a Pan Connector, or rely on Solvent Cement for pipe connection.
4. Drain piping must “fall” away from the Arrestor/Trap, so that, when operating, there is 150mm clear “free-board” of liquid inside the unit.
5. The standard Arrestor/Trap Basket is a Polymer moulding fitted with a corrosion resistant metal handle. It should be installed so that the Basket is down below the Outlet internal port near the bottom of the unit. The Handle will be above normal liquid level.



45L GREASE TRAP

INSTALLATION MANUAL



- 6.** Fit the Arrestor/Trap Cover by locating the six tabs on the underside into the matching recesses in the Trap rim and pressing firmly down to engage. The Cover is then partially rotated clockwise until tight.
- 7.** (Recommended) Use stainless steel self tapping screw(s) to secure the Arrestor/Trap Cover to the Arrestor/Trap Body.
- 8.** The Arrestor/Trap Cover is removed by unscrewing the self tapping screw(s) (if installed) and partially rotating the Arrestor/Trap Cover anti-clockwise. It may be necessary to tap the raised moulded “blocks” with a wood or plastic mallet to release it. A metal hammer or other hard faced object should not be used in direct contact with the Polymer Cover.